

Greater Cleveland RTA  
Rail~volution  
October 17, 2011

# Cleveland Transportation Corridors



# Cleveland, Ohio

- GCRTA is the public transit provider for Cuyahoga County
- Five modes: bus, express bus, BRT, light rail, heavy rail
- \$229.3 million in operating expenses (FY 2009)
- 45.6 million unlinked trips (FY 2009)
- 6.1% transit mode share countywide (2005-09 ACS)

# Cleveland, Ohio

- Recent success: Healthline BRT
- \$4.5B in investment
- 60% increase in ridership
- 92% customer satisfaction



# Priority Transit Corridors

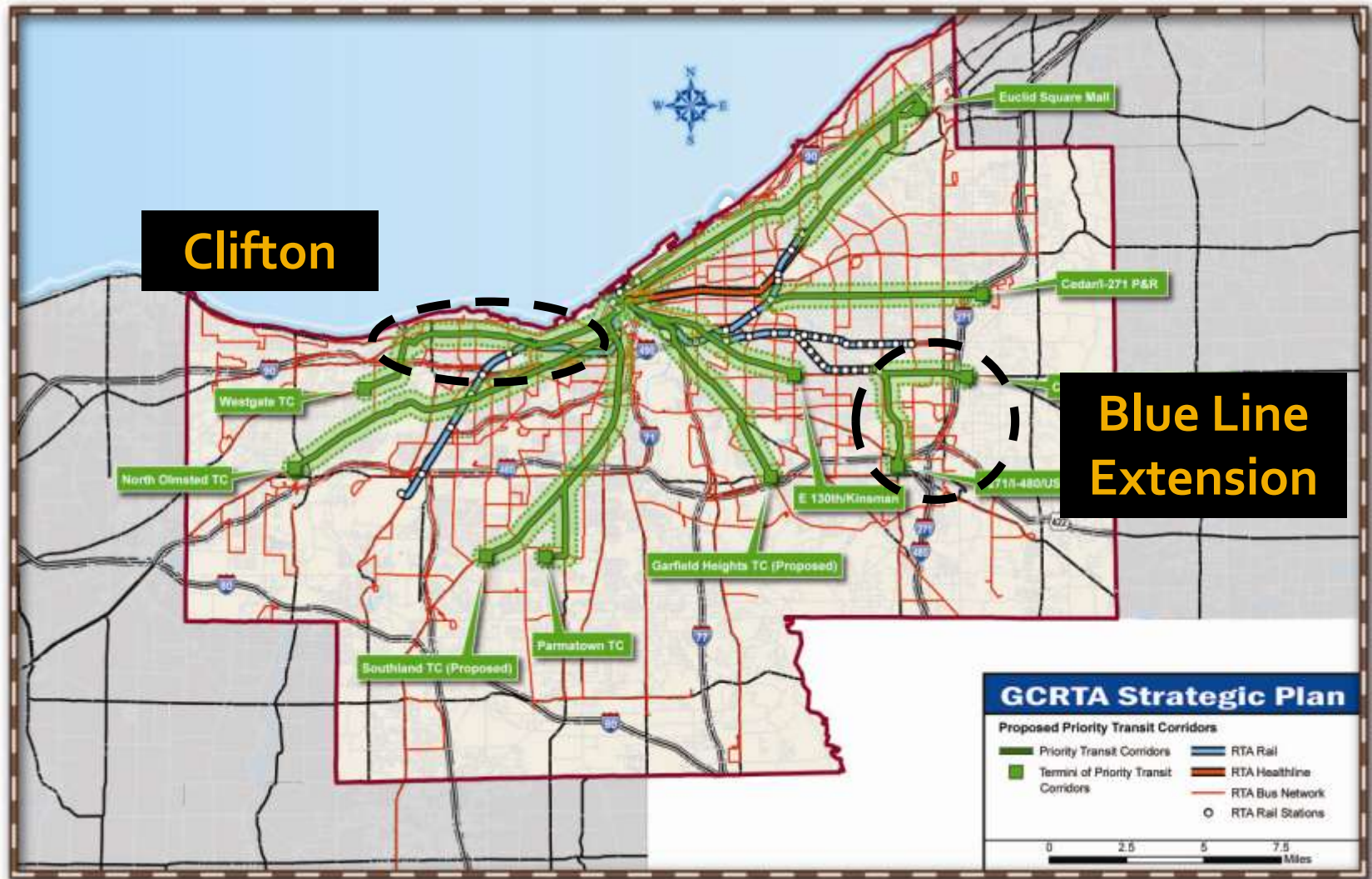


# Priority Transit Corridors

## Selection Process:

1. Used regional trip model data to determine TAZs with best potential for additional ridership
2. Data included
  - Job/population density
  - HH Income
  - Mode share
3. Corridors selected based on contiguous zones

# Priority Transit Corridors



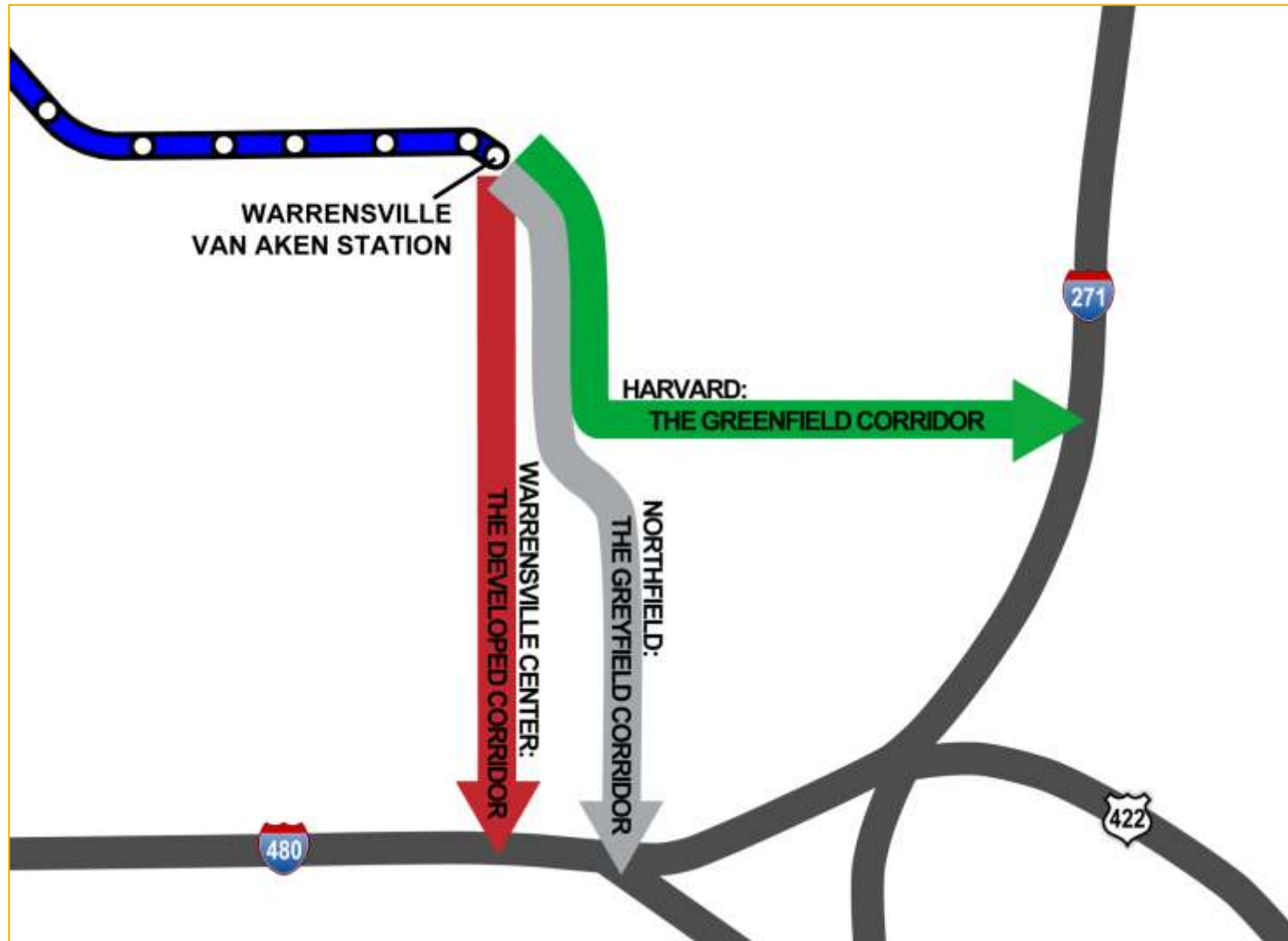
# Clifton Blvd Corridor



# Blue Line Corridor Extension Study

- New Shaker Intermodal Transit Center
- Corridor-based extension to Cleveland's beltway
- Park and ride lot at the freeway

# Three Distinct Corridors



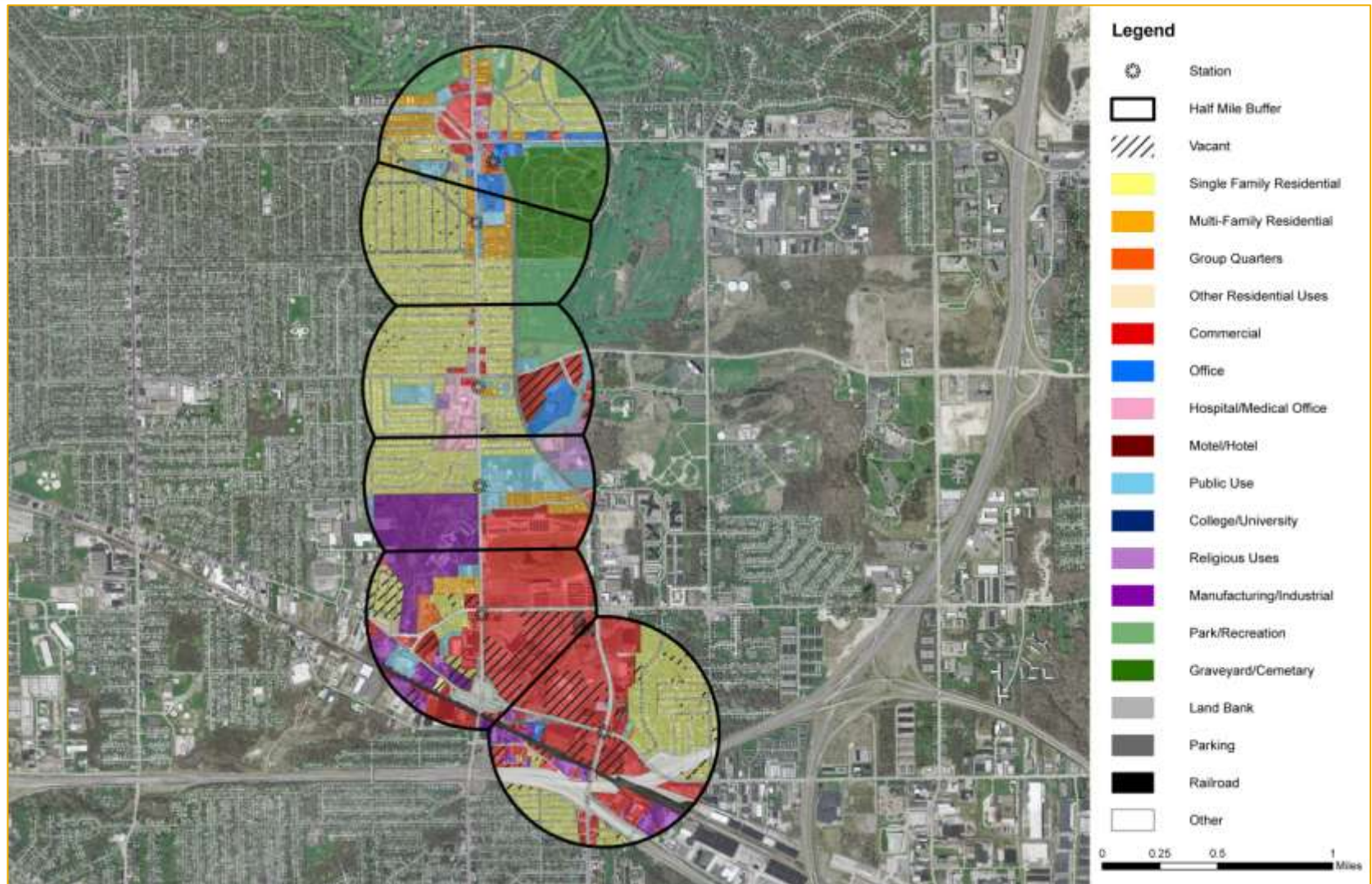
# Warrensville Center: The Developed Corridor



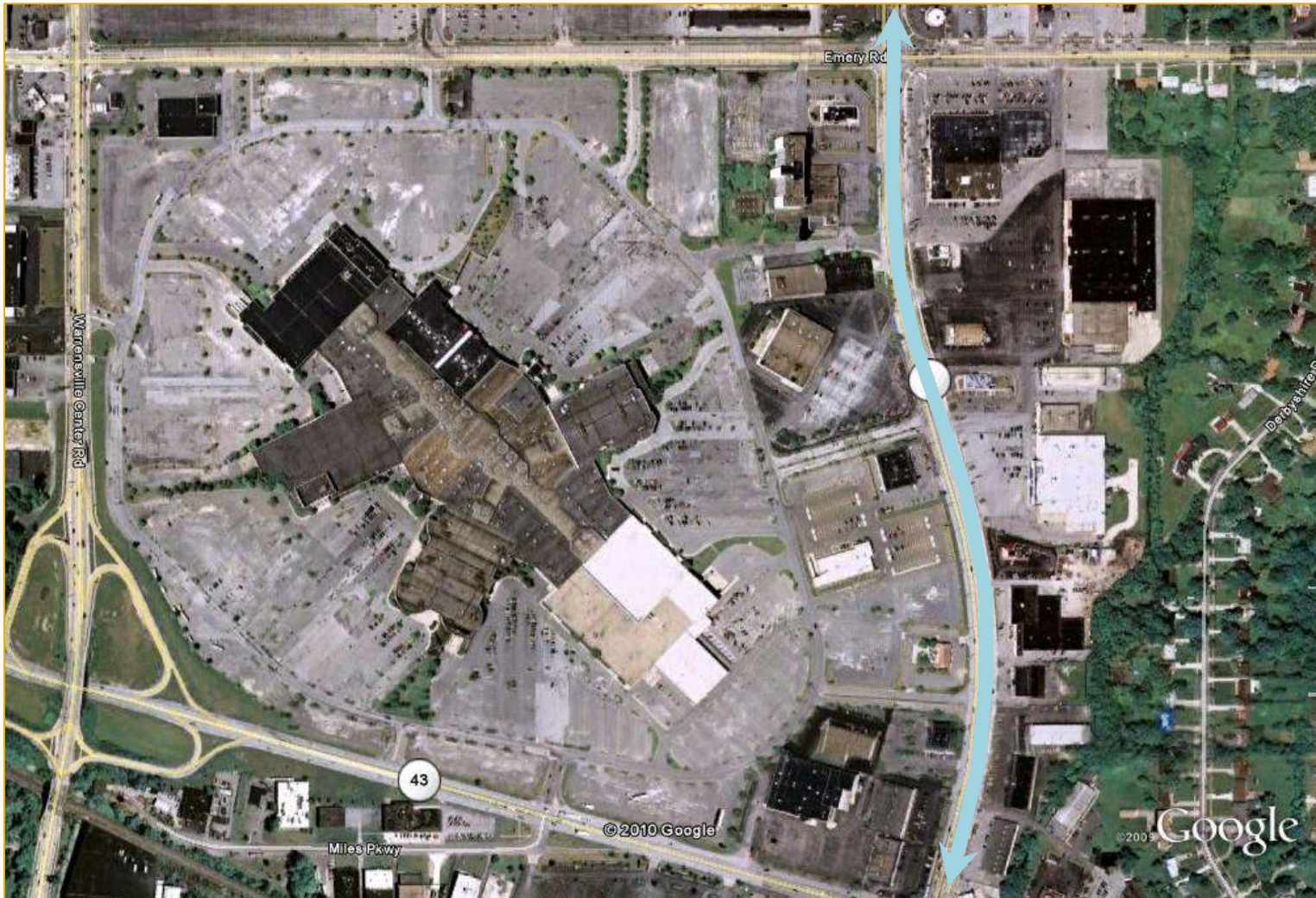
# Warrensville Center: The Developed Corridor



# Warrensville Center: The Developed Corridor



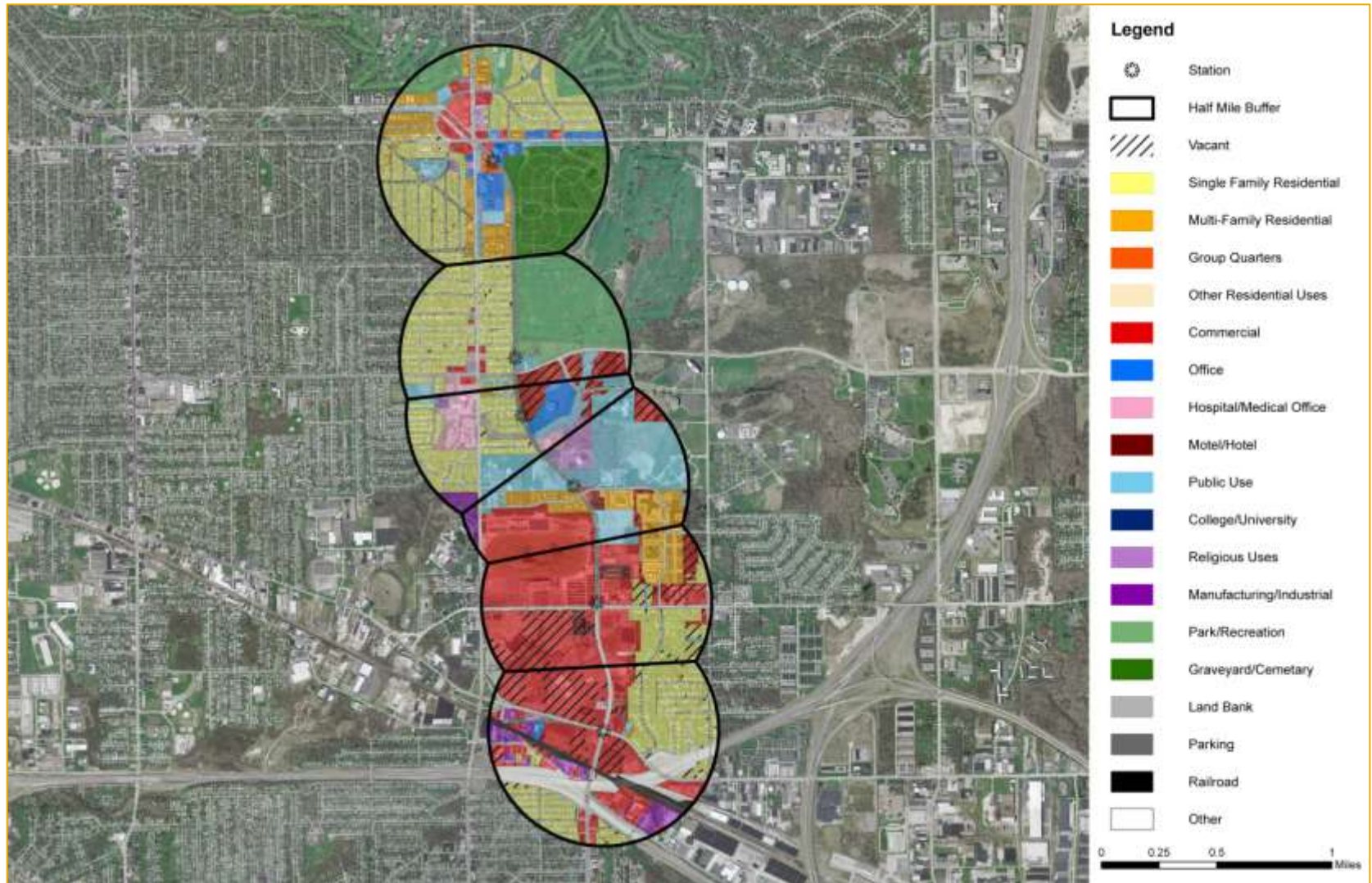
# Northfield Road: The Greyfield Corridor



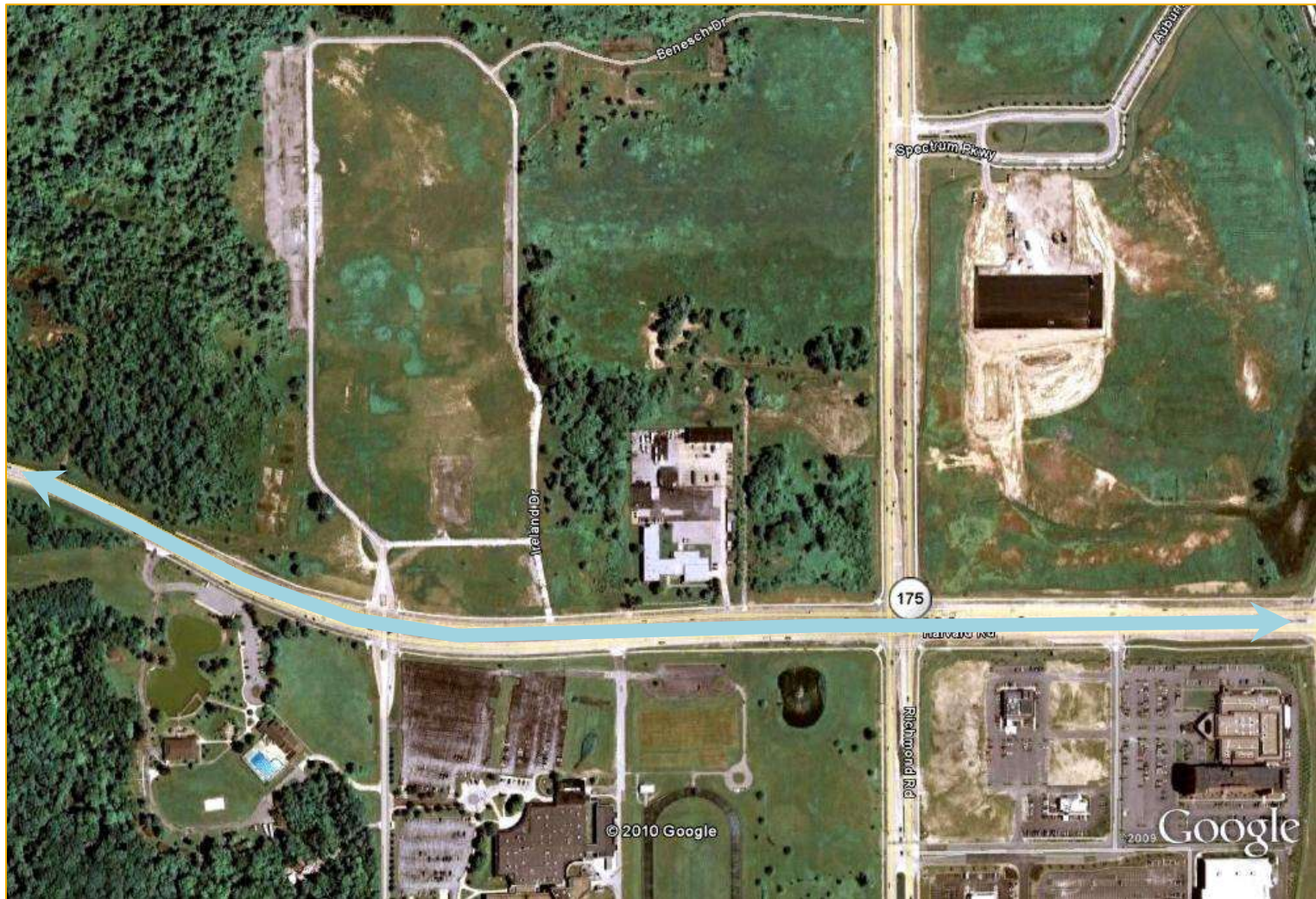
# Northfield Road: The Greyfield Corridor



# Northfield Road: The Greyfield Corridor



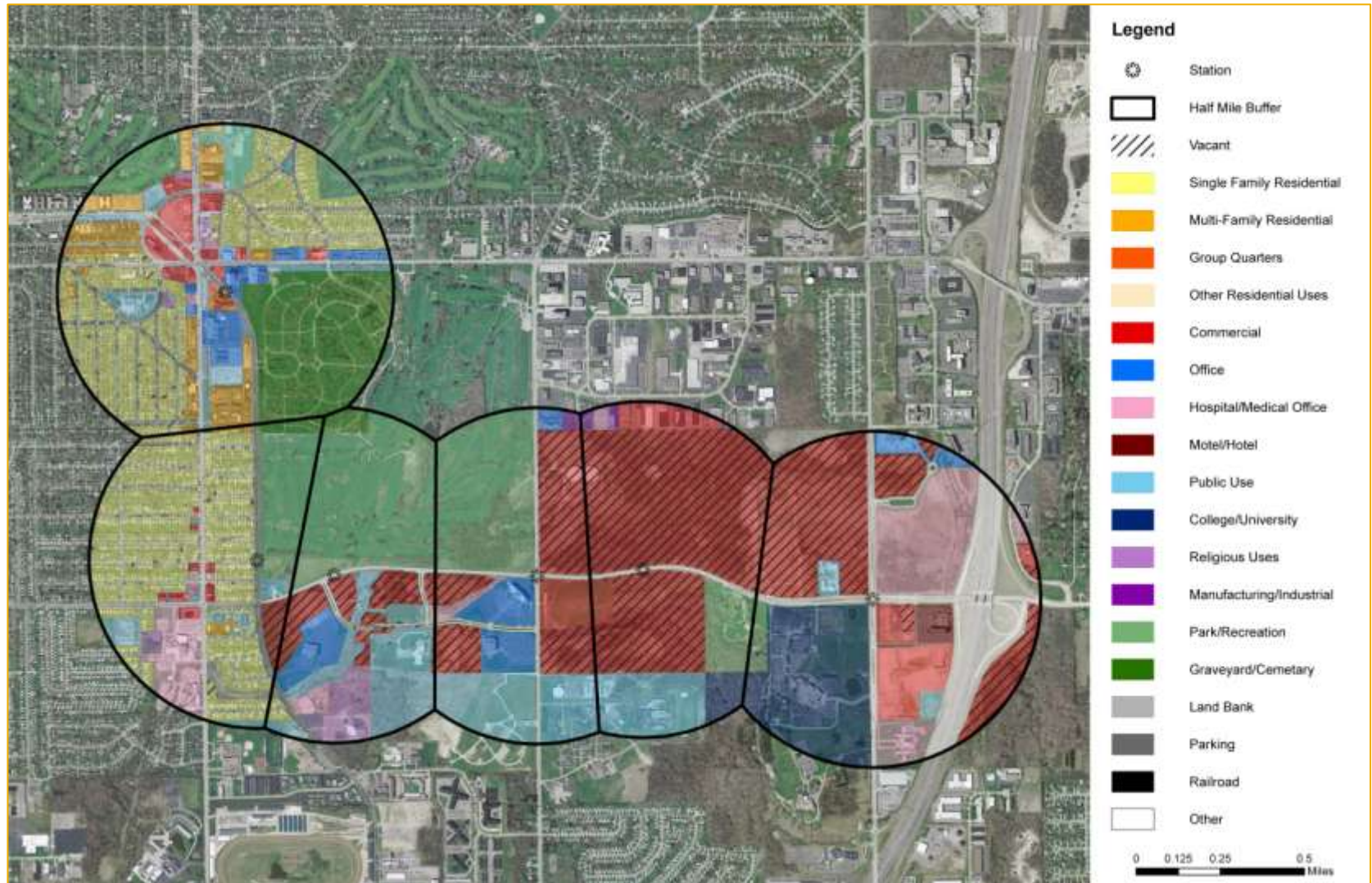
# Harvard Road: The Greenfield Corridor



# Harvard Road: The Greenfield Corridor



# Harvard Road: The Greenfield Corridor



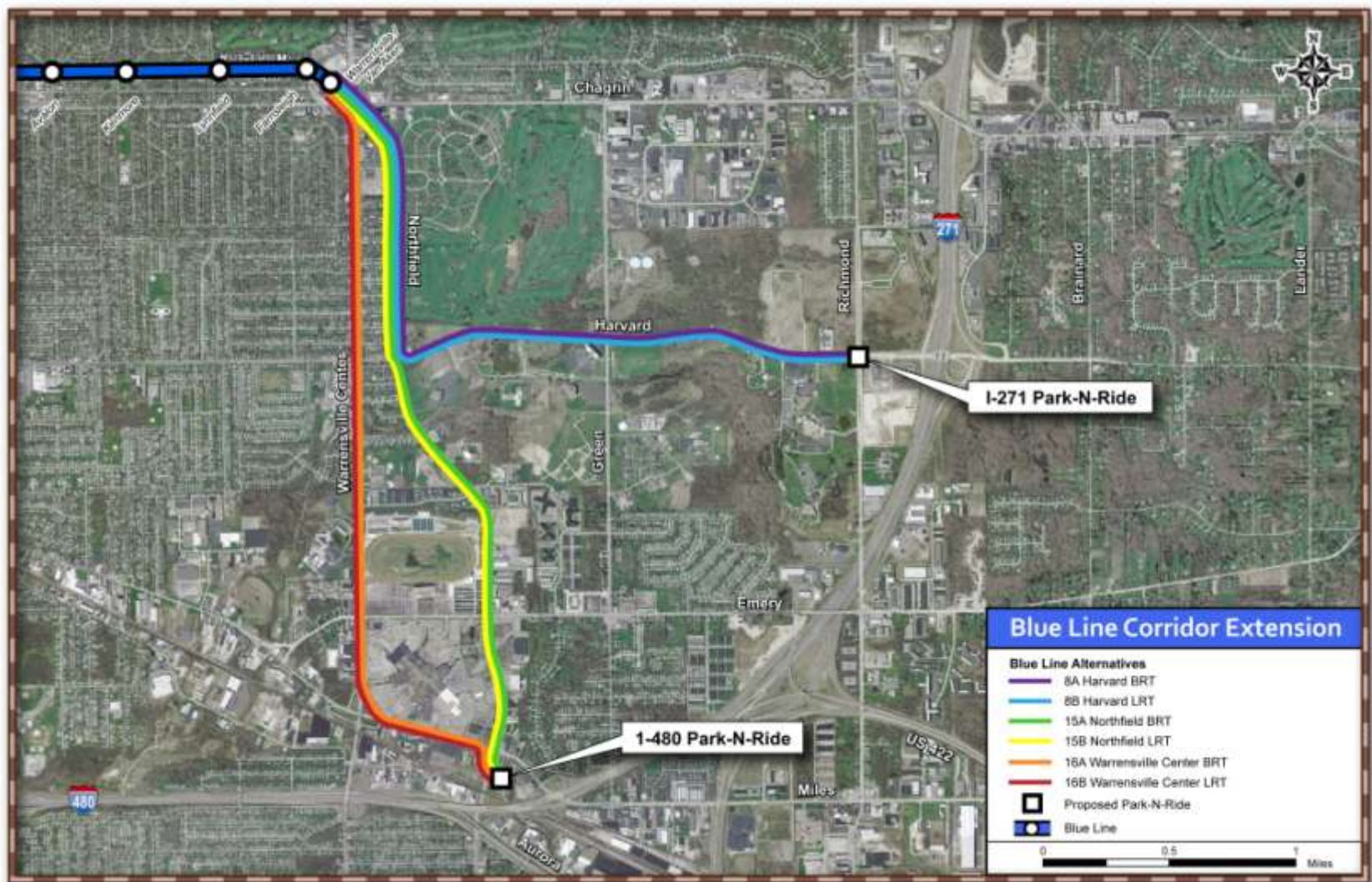
# Blue Line Study Update

## October 2011

- Alternatives developed
  - No-Build
  - Transportation System Management (TSM) Alternative
  - Bus Rapid Transit
  - Light Rail Extension

# Blue Line Study Update

## October 2011



# Blue Line Study Update

## October 2011

- Detailed screening:

	TSM	HARVARD	NORTHFIELD	WARRENSVILLE
<b>RIDERSHIP</b> <i>*EXISTING</i> <i>*FUTURE GROWTH</i>	+	+		
<b>DEVELOPMENT</b> <i>*NEW</i> <i>*REDEVELOPMENT</i> <i>*DENSITY</i>		+	+	

# Blue Line Study Update

## October 2011

- Detailed screening:

	TSM	HARVARD	NORTHFIELD	WARRENSVILLE
ENVIRONMENTAL IMPACT	=	=	=	=
USER BENEFIT	+	=		
ANNUALIZED COST *OPERATIONS *CAPITAL	+	+		

# Blue Line Study Update

## October 2011

- Modeling Results
    - TSM performs the best of all alternatives
    - Harvard LRT is best of the build alts
- BUT...**
- The developers have shown no interest in TOD
  - The development agreement for the parcels goes back to the 80s and allows for large scale, corporate campus development

# Blue Line Study Update

## October 2011

- The reluctance to pursue TOD means no further work will be done to model a Harvard alternative with enhanced density

# Blue Line Study Update

## October 2011

- Study Status
  - Locally preferred alternative is expected to be developed in October-November 2011

# THANK YOU!

- Contact Information

*Maribeth Feke, AICP*

*Director of Planning*

*Greater Cleveland RTA*

*1240 W. 6<sup>th</sup> Street*

*Cleveland, Ohio 44113*

*216-566-5100*