

UNION DEPOT



A MULTIMODAL TRANSPORTATION HUB AND URBAN MARKETPLACE
RAMSEY COUNTY REGIONAL RAILROAD AUTHORITY



SITE OVERVIEW



A MULTIMODAL TRANSPORTATION HUB AND URBAN MARKETPLACE
RAMSEY COUNTY REGIONAL RAILROAD AUTHORITY



UNION DEPOT



Once called St. Paul's "living room."

HISTORY AND CONSTRUCTION

A MULTIMODAL TRANSPORTATION HUB AND URBAN MARKETPLACE

RAMSEY COUNTY REGIONAL RAILROAD AUTHORITY

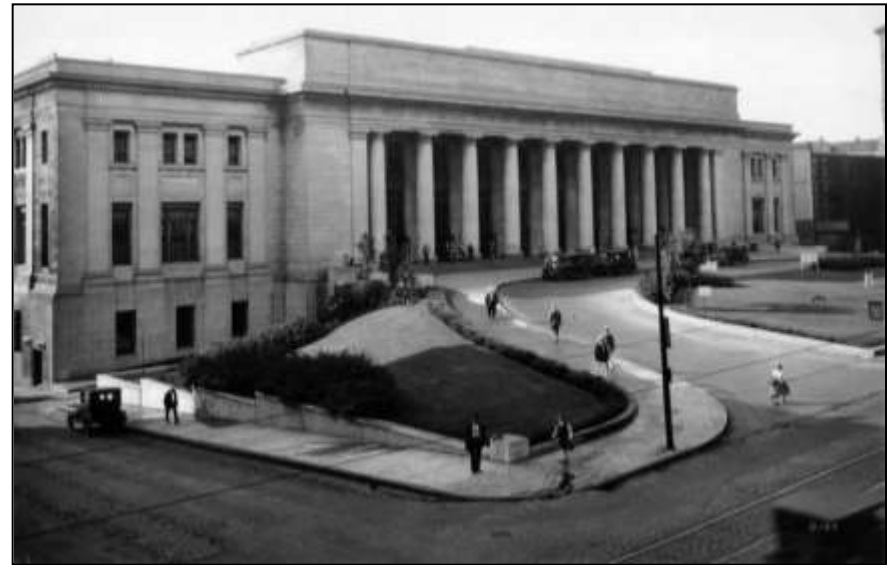


HISTORY



1919 – Construction of the current Union Depot

At its peak in the 1920s, there were 282 train movements daily.



A MULTIMODAL TRANSPORTATION HUB AND URBAN MARKETPLACE
RAMSEY COUNTY REGIONAL RAILROAD AUTHORITY



HISTORY



The train deck had 10 platforms serving 20 tracks and 20,000 passengers daily.

1971 – The last passenger train leaves St. Paul Union Depot.

1974 – The Union Depot is designated on the National Register of Historic Places.

A MULTIMODAL TRANSPORTATION HUB AND URBAN MARKETPLACE
RAMSEY COUNTY REGIONAL RAILROAD AUTHORITY



HISTORY

- 2005-2009 – RCRRA purchases The Union Depot property from United States Postal Service and other owners, securing ownership of 33-acre facility.
- 2010 – RCRRA approves contract and design.
- 2011 – Major construction renovation begins to renew Union Depot for the 21st century.



A MULTIMODAL TRANSPORTATION HUB AND URBAN MARKETPLACE
RAMSEY COUNTY REGIONAL RAILROAD AUTHORITY



UNION DEPOT



Achieving “brand new 1924” **RESTORATION AND REVITALIZATION**

A MULTIMODAL TRANSPORTATION HUB AND URBAN MARKETPLACE
RAMSEY COUNTY REGIONAL RAILROAD AUTHORITY



FUNDING

- Funding is a mixture of federal sources, state bonds and RCRRA levy dollars.
 - SAFETEA LU, 1301 federal funds \$45.3 million
 - Federal Railroad Administration \$40 million
 - TIGER 1 federal funds \$35 million
 - Federal Transit Administration \$4 million
 - State bond funds \$13.7 million
 - Expended RCRRA levy (as of 9/10) \$51.5 million



JOBS, JOBS, JOBS

- Project will create 3,000 jobs for all companies involved on-site and off-site.
- On-site trades jobs estimated to be 1,200, totaling 750,000 work hours.
- Peak on-site workforce will be 300, more than 95% local trades people.



A MULTIMODAL TRANSPORTATION HUB AND URBAN MARKETPLACE
RAMSEY COUNTY REGIONAL RAILROAD AUTHORITY



MIX OF HISTORIC AND NEW CONSTRUCTION



A MULTIMODAL TRANSPORTATION HUB AND URBAN MARKETPLACE
RAMSEY COUNTY REGIONAL RAILROAD AUTHORITY



CONSTRUCTION



Plaza and light rail platform construction.

A MULTIMODAL TRANSPORTATION HUB AND URBAN MARKETPLACE
RAMSEY COUNTY REGIONAL RAILROAD AUTHORITY



HISTORIC RESTORATION



Restoration of the Great Hall.

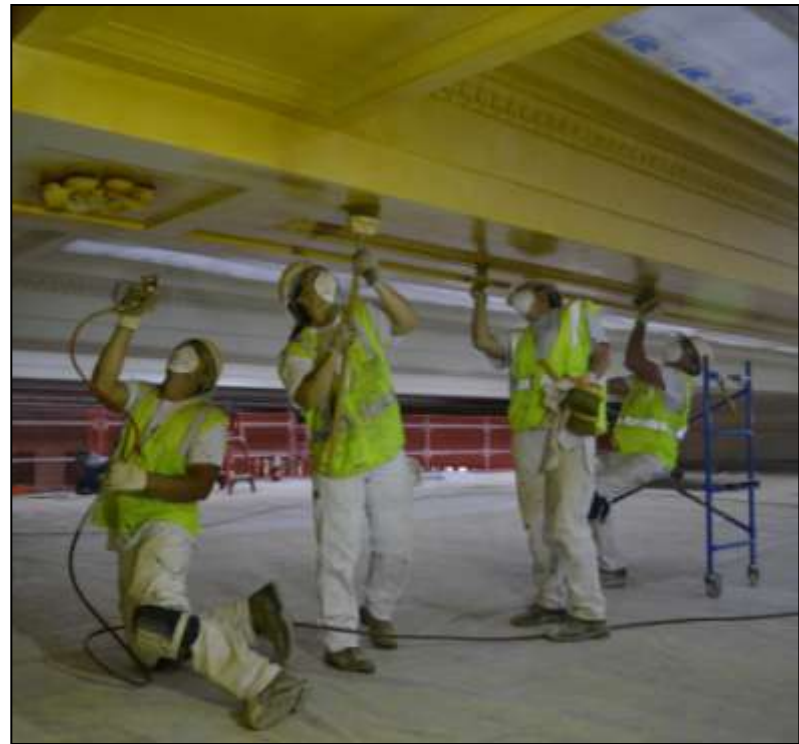
A MULTIMODAL TRANSPORTATION HUB AND URBAN MARKETPLACE
RAMSEY COUNTY REGIONAL RAILROAD AUTHORITY



HISTORIC RESTORATION



Marble column cleaning.



Returning to historic color palette.

A MULTIMODAL TRANSPORTATION HUB AND URBAN MARKETPLACE
RAMSEY COUNTY REGIONAL RAILROAD AUTHORITY



AS OF OCT. 2011: 35 PERCENT COMPLETE



A MULTIMODAL TRANSPORTATION HUB AND URBAN MARKETPLACE
RAMSEY COUNTY REGIONAL RAILROAD AUTHORITY



UNION DEPOT



A new vision for a new era
THE DEPOT AS A 21ST CENTURY DESTINATION

A MULTIMODAL TRANSPORTATION HUB AND URBAN MARKETPLACE
RAMSEY COUNTY REGIONAL RAILROAD AUTHORITY



THE BIG PICTURE



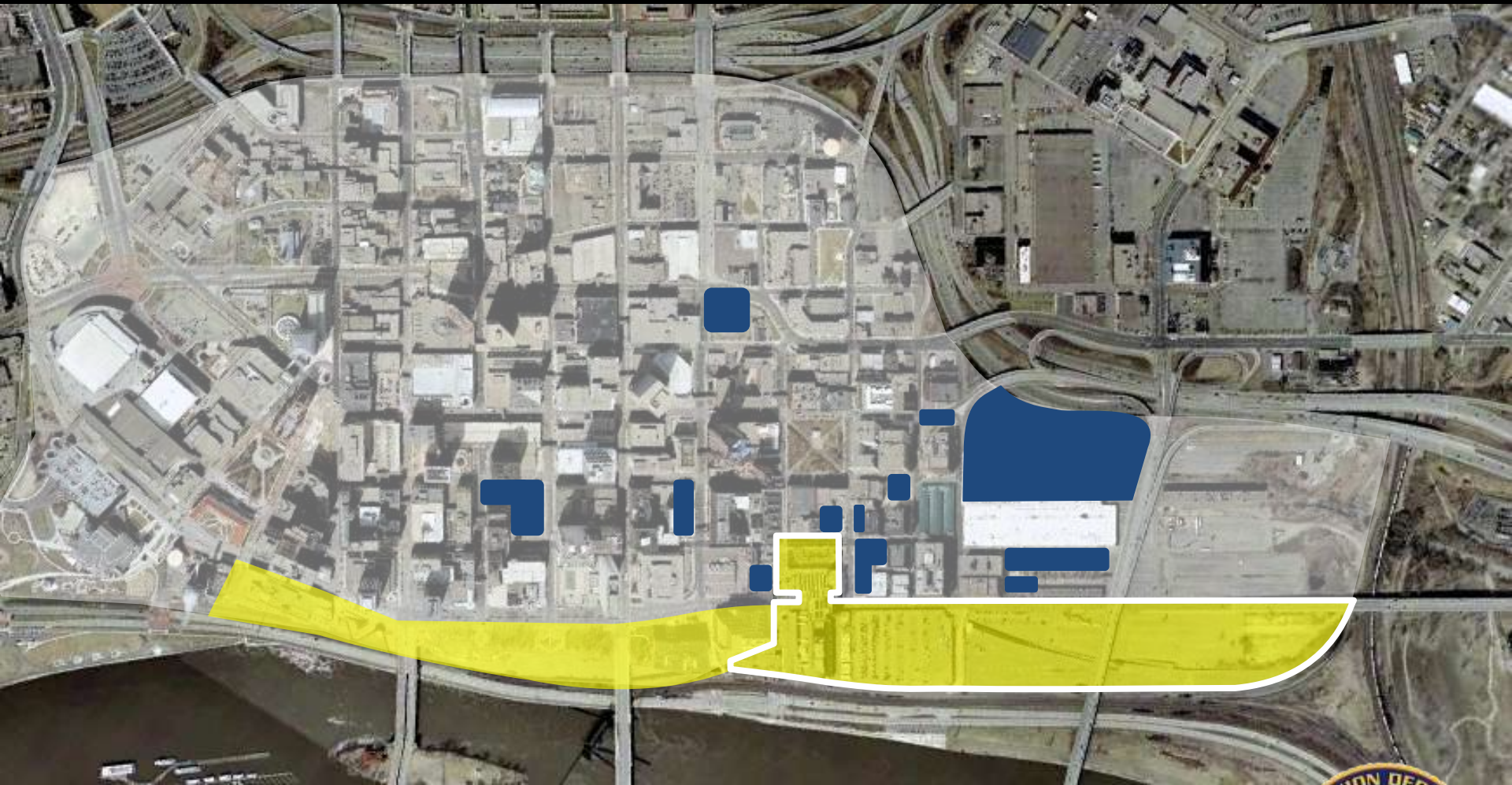
SITE CONTEXT | 1/3 OF DOWNTOWN RIVERFRONT



A MULTIMODAL TRANSPORTATION HUB AND URBAN MARKETPLACE
RAMSEY COUNTY REGIONAL RAILROAD AUTHORITY



LONG-TERM RIVERFRONT STRATEGY



A MULTIMODAL TRANSPORTATION HUB AND URBAN MARKETPLACE
RAMSEY COUNTY REGIONAL RAILROAD AUTHORITY



STEP 1: UNION DEPOT ACTIVATION & DEVELOPMENT



A MULTIMODAL TRANSPORTATION HUB AND URBAN MARKETPLACE
RAMSEY COUNTY REGIONAL RAILROAD AUTHORITY



TRANSPORTATION USE GROWS OVER TIME

Phase I

2012
opening

Amtrak
Greyhound
Jefferson Lines
Metro Transit

Phase II

2014
opening

Central Corridor LRT

Phase III

2015-2030
opening

Red Rock | Rush Line
Gateway | Riverview
Robert Street

High-speed rail to
Chicago

Intra-state
passenger rail

A MULTIMODAL TRANSPORTATION HUB AND URBAN MARKETPLACE
RAMSEY COUNTY REGIONAL RAILROAD AUTHORITY



DEVELOPING UNION DEPOT



A MULTIMODAL TRANSPORTATION HUB AND URBAN MARKETPLACE
RAMSEY COUNTY REGIONAL RAILROAD AUTHORITY



THREE-PRONGED APPROACH

1. Multimodal transportation hub

will grow over time.

2. Unique marketplace

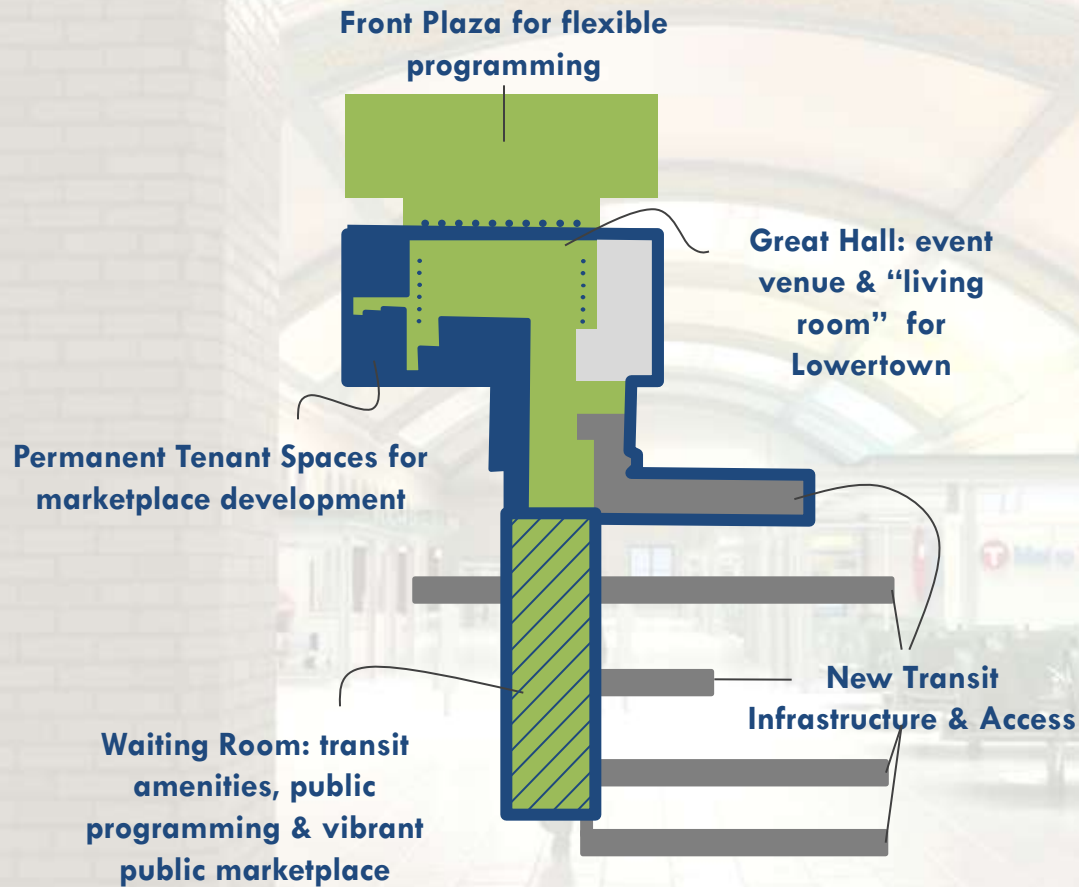
to drive traffic and establish as a destination.

3. Flexible space for cultural programming

to draw and celebrate the history and legacy of Lowertown.



CONCEPTUAL BUILDING PROGRAM



A MULTIMODAL TRANSPORTATION HUB AND URBAN MARKETPLACE
RAMSEY COUNTY REGIONAL RAILROAD AUTHORITY



SUSTAINING THE COMMUNITY'S VISION

Make it **Transit-complementary**



Make it **Local**



Make it **Beautiful**



Make it **Connected**



A MULTIMODAL TRANSPORTATION HUB AND URBAN MARKETPLACE
RAMSEY COUNTY REGIONAL RAILROAD AUTHORITY



UNION DEPOT

Find us on Facebook
facebook.com/uniondepot

Questions?

Commissioner Jim McDonough, Chair
Ramsey County Regional Railroad Authority
Jim.McDonough@co.ramsey.mn.us

A MULTIMODAL TRANSPORTATION HUB AND URBAN MARKETPLACE
RAMSEY COUNTY REGIONAL RAILROAD AUTHORITY

